

Fred V. Fowler Company, Inc.



Economy Spirit Level

Special Features:

- The Economy Spirit Level is used for accurately checking the work of toolmakers and machinists and for the setting up of machinery and other work that requires extreme leveling accuracy.
- Plastic knobs on the frame insulate instrument from the heat of the hand. Prismatic base for round work.
- Main level vial is graduated to 10 second accuracy. 1 division equals .0005" per 10" (.05mm/m).
- Auxiliary vial is used to ensure that level is set properly on round items.
- Body of level is made of cast iron, and the base is hand scraped for extreme accuracy.
- Includes wooden case.



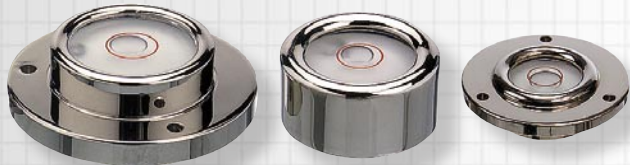
▲ Economy Spirit Level No. 52-422-008

Order No.	Description
52-422-008	Economy Spirit Level—8"
52-422-012	Economy Spirit Level—12"

Wyler Spirit Levels

Special Features—No. 52-422-072, 073 & 074:

- Circular Spirit Levels are used for leveling machines and other types of apparatus.
- Mounting diameter of No. 52-422-074 is .984" (25mm). The screw hole diameter on this model is .098" (2.5mm)
- Mounting diameter on #52-422-072 is 1.968" (50mm). The screw hole diameter is .135" (3.5mm).



▲ Circular Spirit Levels: left to right—No. 52-422-072, 073 & 074

Special Features—No. 52-422-066:

- Screw-on Spirit Levels are used for leveling machines and other apparatus.
- Overall length: 2.36" (60mm)
- Thickness: .55" (14mm)
- Width: .47" (12mm)
- Hole diameter: .135" (3.5mm)
- Center to center distance: 1.97" (50mm)



▲ Screw-on Spirit Level No. 52-422-066

Order No.	Base Size	Sensitivity of Level
Circular Spirit Levels:		
52-422-072	2.360" (60mm)	20-30 minute of arc.
52-422-073	.787" (20mm)	20-30 minute of arc.
52-422-074	1.181" (30mm)	20-30 minute of arc.
Screw-on Spirit Level:		
52-422-066	2.360" (60mm)	.003"/10", 60 seconds (.3mm/m)

For a full selection of levels turn to the Wyler section of this catalog.