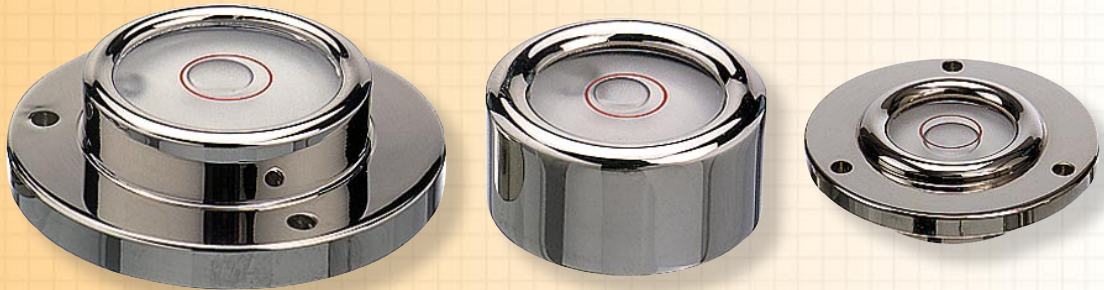


# Fred V. Fowler Company, Inc.



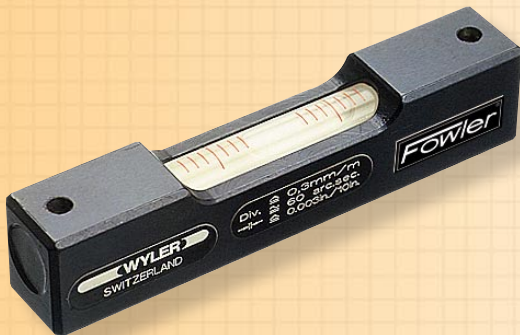
## Wyler Spirit Levels



▲ Circular Spirit Levels: left to right—No. 52-422-072, 073 & 074

### Special Features—No. 52-422-072, 073 & 074

- Circular Spirit Levels are used for leveling machines and other types of apparatus.
- Mounting diameter of No. 52-422-074 is .984" (25mm). The screw hole diameter on this model is .098" (2.5mm).
- Mounting diameter on No. 52-422-072 is 1.968" (50mm). The screw hole diameter is .135" (3.5mm).



▲ Screw-on Spirit Level No. 52-422-066

### Special Features—No. 52-422-066

- Screw-on Spirit Levels are used for leveling machines, apparatus and other technical purposes.
- Overall length: 2.36" (60mm)
- Thickness: .55" (14mm)
- Width: .47" (12mm)
- Hole diameter: .135" (3.5mm)
- Center to center distance: 1.97" (50mm)

Order No.	Base Size	Sensitivity of Level
<b>Circular Spirit Levels:</b>		
52-422-072	2.360" (60mm)	20-30 minute of arc.
52-422-073	.787" (20mm)	20-30 minute of arc.
52-422-074	1.181" (30mm)	20-30 minute of arc.
<b>Screw-on Spirit Level:</b>		
52-422-066	2.360" (60mm)	.003"/10", 60 seconds (.3mm/m)

*Other styles, sizes and sensitivities are available upon request.*